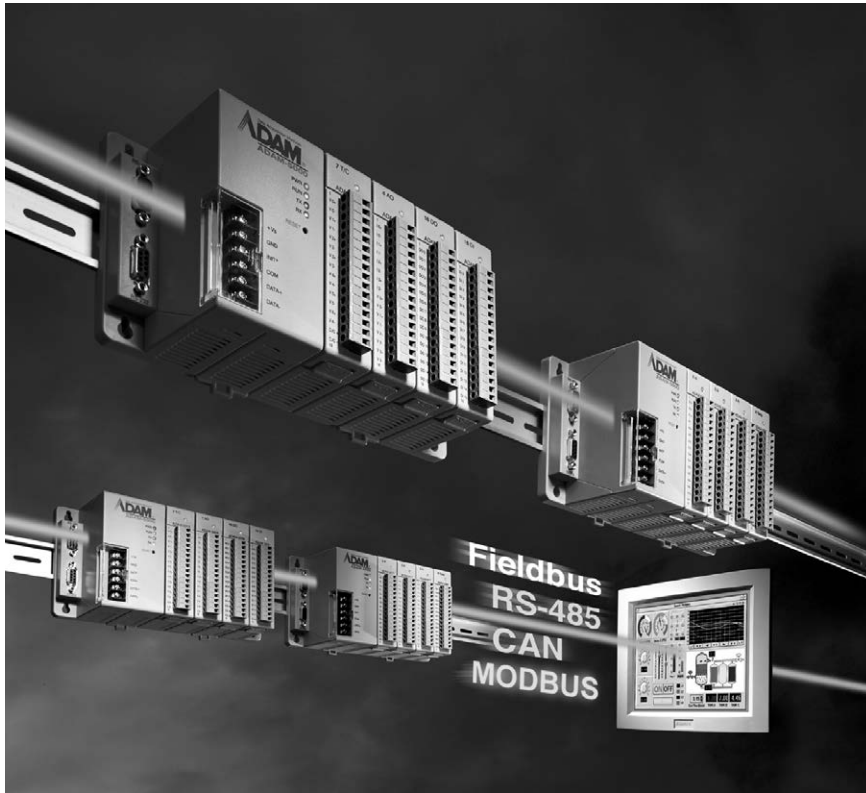


ADAM-5000 Series

Vertrieb durch **AMC**
AMC – Analytik & Messtechnik GmbH Chemnitz
 Heinrich-Lorenz-Str. 55 Tel.: +49/371/38388-0
 09120 Chemnitz Fax: +49/371/38388-99
 E-Mail: info@amc-systeme.de Web: www.amc-systeme.de



Open Network and Fieldbus Solutions for Device Networking

Introduction

The Fieldbus concept will change the control environment and device characteristics of future control systems in both processing and manufacturing. Compared with traditional systems, the Fieldbus system reduces cost of cabling, commissioning, and installation. In addition, the Fieldbus system has greater reliability.

The ADAM-5000 series, a compact distributed data acquisition and control system, supports the shift toward Fieldbus-based systems. Based on popular Fieldbus data communication structures such as RS-485 and Modbus, the ADAM-5000 series now offers two different DA&C systems that allow field I/O devices to easily connect to PC network applications: the ADAM-5000 DA&C systems and the ADAM-5510 series of PC-based controllers.

Distributed I/O Systems

Ethernet-based Data Acquisition and Control System

With the ADAM-5000/TCP as your Ethernet I/O data processing center, you can monitor and control field signals at a speed of 10/100 Mbps. The best field-proven communication performance that can be reached in industrial network environments. Additionally, the popular Modbus/TCP protocol is supported as well.

RS-485 based Data Acquisition and Control System

The ADAM-5000/485 system is a data acquisition and control system that can acquire, monitor and control data through multi-channel I/O modules. It communicates with a network master over a twisted-pair, multi-drop RS-485 network. Both ADAM ASCII and Modbus/RTU protocols are supported.

PC-based Controllers

Ethernet-enabled PC-based Controllers

The ADAM-5510 series of PC-based programmable controllers includes ADAM-5510M, ADAM-5510E, ADAM-5510/TCP and ADAM-5510E/TCP. They feature Intel x86-based CPUs running Datalight ROM-DOS.

Users can use Borland C 3.0 to develop the application program and then download it by Windows-based ADAM-5510 series utility. The Ethernet-enabled feature of ADAM-5510/TCP and ADAM-5510E/TCP enables features like: FTP server, web server, TCP/UDP connections and email alarm. The ADAM-5510 controllers also have high expansion capability by supporting Modbus/RTU master/slave and Modbus/TCP client/server functions.

ADAM-5550CE features AMD GX2 CPU running Windows CE operating system. Users can use Microsoft Visual Studio .NET to develop the application program.

ADAM-5550KW and ADAM-5510KW series allow users leverage IEC 61131-3 SoftLogic programming environment to complete their automation task.



- 1 WebAccess+ Solutions
- 2 Machine Automation
- 3 Energy Automation
- 4 Building Automation Systems
- 5 Automation Software
- 6 Operator Panels
- 7 Automation Panel PCs
- 8 Industrial Panel Computers & Panel PC
- 9 Industrial Monitors
- 10 Industrial Wireless Solutions
- 11 Industrial Ethernet Solutions
- 12 Serial Device Servers and IP Gateways
- 13 Serial Communication Cards
- 14 Embedded Automation Computers
- 15 PACs
- 16 Compact PCI Systems
- 17 M2M I/O Modules
- 18 RS-485 I/O Modules

Distributed I/O Systems & PC-based Controllers

Maximum System Design Flexibility

The ADAM-5000's modular design allows users to tailor solutions based on their own requirements. Built-in programmable I/O ranges and alarm outputs enhance flexibility in system design. A variety of communication media such as twisted-pair wiring, radio modems and fiber optics are supported.

System Maintenance and Troubleshooting

The ADAM-5000 series uses hardware self-test and software diagnosis to monitor system problems. Also included is a watchdog timer that monitors the microprocessor. If the system crashes, the watchdog automatically resets the system. Node ID setting is easily accomplished by setting a DIP switch on the front of the system.

Easy Installation and Networking

The ADAM-5000 series can be easily mounted on a DIN-rail or on a panel. Signal connections, network modifications and maintenance are simple and quick. Building a multi-drop network only requires a single twisted pair of wires.

Proven for Industrial Environments

The ADAM-5000 series can operate in industrial environments at temperatures between -10 and 70°C, and can use unregulated power sources between 10 and 30 V_{DC}. These units are protected against accidental power supply reversals. A 3-way isolation design (I/O, power & communication) prevents ground loops and reduces the effect of electrical noise in the system.

Extensive Software Support

The ADAM-5000 series is supported by most standard process controls and HMI software. .NET Class LIB is provided for use with Windows applications. OPC drivers provide links to a wide range of HMI/SCADA software packages such as InTouch, FIX and ICONICS. Advantech data acquisition software and Advantech Studio SCADA/HMI software are both tightly integrated with the ADAM-5000 systems.



DIN-rail Mounting
 Installed on industrial standard DIN-rails



Panel/Wall Mounting
 Flat surface system mounting

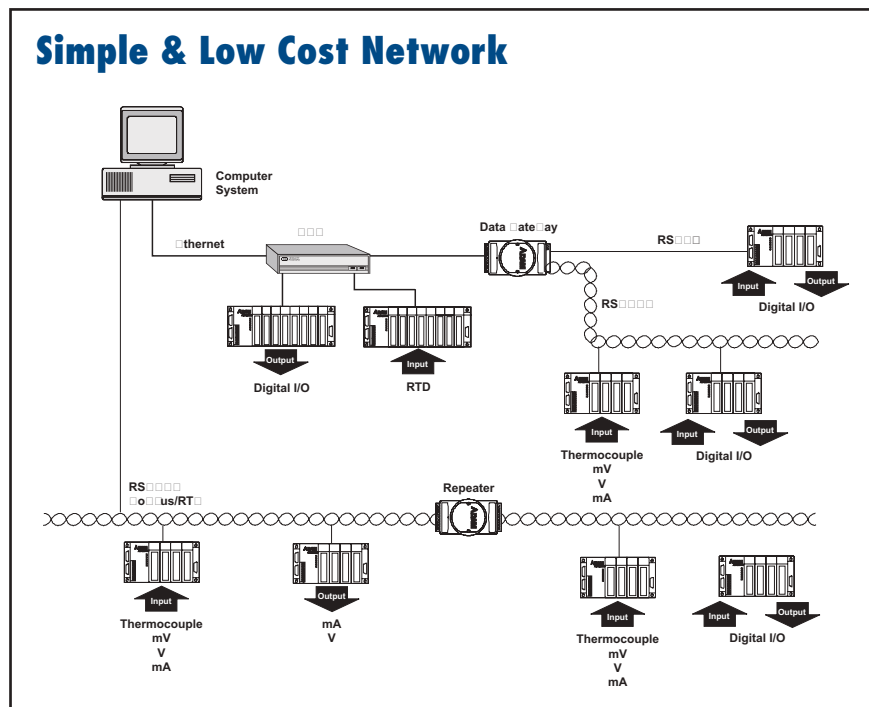


Node ID Setting
 8-pin dip switch configuration



Connection
 Pre-wired plug-in terminals with I/O modules

Simple & Low Cost Network



ADAM-5000 Controller Selection Guide

Vertrieb durch



AMC – Analytik & Messtechnik GmbH Chemnitz

Heinrich-Lorenz-Str. 55 Tel.: +49/371/38388-0
 09120 Chemnitz Fax: +49/371/38388-99
 E-Mail: info@amc-systeme.de Web: www.amc-systeme.de

NEW



System		ADAM-5510M ADAM-5510KW	ADAM-5510E	ADAM-5510/TCP ADAM-5510KW/TCP	ADAM-5510E/TCP ADAM-5510EKW/TP	ADAM-5560CE ADAM-5560KW
CPU		80188				Intel Atom Z510P 1.1 GHz
RAM		640 KB				1 GB DDR2 SDRAM
Flash ROM		256 KB				-
Flash Memory		256 KB				-
Flash Disk		1 MB				-
OS		ROM-DOS				WinCE
Control Software		ADAM-5510M: Borland C ADAM-5510KW: KW SoftLogic	Borland C	ADAM-5510/TCP: Borland C ADAM-5510KW/TCP: KW SoftLogic	ADAM-5510E/TCP: Borland C ADAM-5510EKW/TP: KW SoftLogic	ADAM-5560CE: C/C++ and .NET ADAM-5560KW: KW SoftLogic
Real-time Clock		Yes				
Watchdog Timer		Yes				
COM1		RS-232	RS-232/485	RS-232	RS-232/RS-485	RS-232/485
COM2		RS-485				
COM3 (Programming)		RS-232 (TX, RX, GND)				RS-232/485
COM4		RS-232/485				
I/O Slots		4	8	4	8	7
Power Consumption		4 W				17 W
Isolation	Communication	2,500 V _{DC} (COM2 RS-485)				2,500 V _{DC} (COM2 RS-485) 1,500 V _{DC} (COM1, COM3, COM4 RS-485)
	Communication Power	3,000 V _{DC}				
	I/O Module	3,000 V _{DC}				
Diagnosis	Status Display	Power, CPU, Communication, Battery				Power, User Define
	Self Test	Yes, while ON				
	Software Diagnosis	Yes				
Communication	Interface	RS-232/485		Ethernet (RJ-45)		Ethernet (2 x RJ-45)
	Speeds	1,200 bps ~ 115.2 kbps		10/100 Mbps		10/100 Mbps
	Max. Distance	4,000 feet (1.2 km)		100 m		100 m
	Data Format	N, 8, 1, 1		-		-
	Max. Nodes	32	32	256 for Ethernet, 32 for RS-485	256 for Ethernet, 32 for RS-485	256 for Ethernet, 32 for RS-485
	Protocol	User Defined, Modbus/RTU	User Defined, Modbus/RTU	User Defined, Modbus/RTU, Modbus/TCP	User Defined, Modbus/RTU, Modbus/TCP	Modbus/RTU, Modbus/TCP
	Remote I/O	Modbus Device				
Power Requirements	10 ~ +30 V _{DC}					
Environment	Operating Temperature	-10 ~ 70°C (14 ~ 158°F)				0 ~ 55°C (32 ~ 131°F)
	Storage Temperature	-25 ~ 85°C (-13 ~ 185°F)				
	Humidity	5 ~ 95%				
Dimension (mm)		231 x 110 x 75	355 x 110 x 75	231 x 110 x 75	355 x 110 x 75	355 x 110 x 75
Page		15-36	15-36	online	online	15-35

- 1 WebAccess+ Solutions
- 2 Machine Automation
- 3 Energy Automation
- 4 Building Automation Systems
- 5 Automation Software
- 6 Operator Panels
- 7 Automation Panel PCs
- 8 Industrial Panel Computers & Panel PC
- 9 Industrial Monitors
- 10 Industrial Wireless Solutions
- 11 Industrial Ethernet Solutions
- 12 Serial Device Servers and IP Gateways
- 13 Serial Communication Cards
- 14 Embedded Automation Computers
- 15 PACs
- 16 Compact PCI Systems
- 17 M2M I/O Modules
- 18 RS-485 I/O Modules



ADAM-5000 I/O Module Selection Guide

Vertrieb durch



AMC – Analytik & Messtechnik GmbH Chemnitz

Heinrich-Lorenz-Str. 55 Tel.: +49/371/38388-0
 09120 Chemnitz Fax: +49/371/38388-99
 E-Mail: info@amc-systeme.de Web: www.amc-systeme.de



System	ADAM-5000/485	ADAM-5000E	ADAM-5000L/TCP	ADAM-5000/TCP
CPU	80188	80188	RISC CPU	
RAM	-	-	4 MB	
Flash ROM (User AP)	-	-	512 KB	
Flash Memory (Data Storage)	-	-	-	
Flash Disk	-	-	-	
OS	-	-	real-time OS	
Timer BIOS	-	-	-	
Real-time Clock	-	-	-	
Watchdog Timer	-			Yes
I/O Slots	4	8	4	8
Power Consumption	3 W		4.0 W	5.0 W
Isolation	Communication	2,500 V _{DC}	3,000 V _{DC}	RS-485: 1,500 V _{DC}
	Communication Power	3,000 V _{DC}		
	I/O Module	3,000 V _{DC}		
Diagnosis	Status Display	Power, CPU, Communication		Power, CPU, Error Diagnostic, Communication
	Self Test	Yes, while ON		
	Software Diagnosis	Yes		
Communication	Interface	RS-232/485 (2-wire)	RS-232/485 (2-wire)	Ethernet
	Speeds (bps)	1,200, 2,400, 4,800, 9,600, 19.2 K, 38.4 K, 57.6 K, 115.2 K	1,200, 2,400, 4,800, 9,600, 19.2 K, 38.4 K, 57.6 K, 115.2 K	10 M, 100 M
	Max. Distance	4,000 feet (1.2 km)	4,000 feet (1.2 km)	100 m without repeater
	Data Format	Advantech protocol: N, 8, 1 Modbus protocol: N, 8, 1 N, 8, 2 E, 8, 1 O, 8, 1	Advantech protocol: N, 8, 1 Modbus protocol: N, 8, 1 N, 8, 2 E, 8, 1	TCP/IP
	Max. Nodes	128	128	Depend on IP address
	Protocols	ADAM ASCII/Modbus Protocol	ADAM ASCII/Modbus Protocol	Modbus/TCP
	Remote I/O	-	-	20 nodes Modbus devices
	Power Requirements	+10 ~ +30 V _{DC}		
Environment	Operating Temperature	-10 ~ 70°C (14 ~ 158°F)		
	Storage Temperature	-25 ~ 85°C (-13 ~ 185°F)		
	Humidity	5 ~ 95%		
Dimension (mm)	231 x 110 x 75	355 x 110 x 75	231 x 110 x 75	355 x 110 x 75
Page	15-37	15-37	15-38	15-38



Analog Input/Output Modules

Vertrieb durch



AMC – Analytik & Messtechnik GmbH Chemnitz

Heinrich-Lorenz-Str. 55 Tel.: +49/371/38388-0
 09120 Chemnitz Fax: +49/371/38388-99
 E-Mail: info@amc-systeme.de Web: www.amc-systeme.de



Module		ADAM-5013	ADAM-5017	ADAM-5017P	ADAM-5017UH	ADAM-5018
Analog Input	Resolution	16 bit	16 bit	16 bit	12 bit	16 bit
	Input Channel	3	8	8	8	7
	Sampling Rate	10 (total*)	10 (total*)	10 (total*)	200K**	10 (total*)
	Voltage Input	-	±150 mV, ±500 mV ±1 V, ±5 V, ±10 V	±150 mV, ±500 mV ±15V, ±10V, ±5 V, ±1 V 0 ~ 150mV, 0 ~ 500mV 0 ~ 1V, 0 ~ 5V, 0 ~ 10V 0 ~ 15V	±10 V, 0 ~ 10 V	±15 mV, ±50 mV ±100 mV, ±500 mV ±1 V, ±2.5 V
	Current Input	-	±20 mA	±20 mA, 4 ~ 20mA	0 ~ 20 mA, 4 ~ 20 mA	±20 mA
	Direct Sensor Input	Pt or Ni RTD	-	-	-	J, K, T, E, R, S, B
Isolation		3,000 V _{DC}	3,000 V _{DC}	3,000 V _{DC}	3,000 V _{DC}	3,000 V _{DC}
Page		15-39	15-39	15-39	15-40	15-40

*Sampling rate value depends on used channel number.

Example: Using 5 channels on ADAM-5017, sampling rate for each used channel will be 10/5 = 2 samples/second.

**The sampling rate vary with the controller.



Module		ADAM-5018P	ADAM-5024	ADAM-5050	ADAM-5051/ ADAM-5051D/ ADAM-5051S	ADAM-5052	ADAM-5053S
Analog Input	Resolution	16 bit	-	-	-	-	-
	Input Channel	7	-	-	-	-	-
	Sampling Rate	10 (total*)	-	-	-	-	-
	Voltage Input	±15 mV, ±50 mV ±100 mV, ±500 mV ±1 V, ±2.5 V	-	-	-	-	-
	Current Input	4 ~ 20 mA	-	-	-	-	-
	Direct Sensor Input	J, K, T, E, R, S, B	-	-	-	-	-
Analog Output	Output Channels	-	4	-	-	-	-
	Resolution	-	12 bit	-	-	-	-
	Voltage Output	-	0 ~ 10 V	-	-	-	-
	Current Output	-	0 ~ 20 mA 4 ~ 20 mA	-	-	-	-
Digital Input and Digital Output	Digital Input Channels	-	-	16 DI/O (bit-wise selectable)	16 (ADAM-5051) 16w/LED (5051D/5051S)	8 w/LED	32
	Digital Output Channels	-	-	-	-	-	-
Isolation		3,000 V _{DC}	3,000 V _{DC}	-	2,500 V _{DC} (5051S)	5,000 V _{RMS}	2,500 V _{DC}
Page		15-40	15-41	15-41	15-41	15-42	15-42

*Sampling rate value depends on used channel number.

Example: Using 6 channels on ADAM-5017, sampling rate for each used channel will be 12/6 = 2 samples/second.



- 1 WebAccess+ Solutions
- 2 Machine Automation
- 3 Energy Automation
- 4 Building Automation Systems
- 5 Automation Software
- 6 Operator Panels
- 7 Automation Panel PCs
- 8 Industrial Panel Computers & Panel PC
- 9 Industrial Monitors
- 10 Industrial Wireless Solutions
- 11 Industrial Ethernet Solutions
- 12 Serial Device Servers and IP Gateways
- 13 Serial Communication Cards
- 14 Embedded Automation Computers
- 15 PACs
- 16 Compact PCI Systems
- 17 M2M I/O Modules
- 18 RS-485 I/O Modules

ADAM-5000 I/O Module Selection Guide

Digital Input/Output Modules

Vertrieb durch



AMC – Analytik & Messtechnik GmbH Chemnitz

Heinrich-Lorenz-Str. 55 Tel.: +49/371/38388-0
09120 Chemnitz Fax: +49/371/38388-99
E-Mail: info@amc-systeme.de Web: www.amc-systeme.de



Module		ADAM-5055S	ADAM-5056/ ADAM-5056D	ADAM-5056S/ ADAM-5056SO	ADAM-5057S	ADAM-5060
Digital Input and Digital Output	Digital Input Channels	8 w/LED	-	-	-	-
	Digital Output Channels	8 w/LED	16 (ADAM-5056) 16 w/LED (ADAM-5056D)	16 w/LED	32	6 relay (2 form A/4 form C)
Isolation		2,500 V _{DC}	-	2,500 V _{DC}	2,500 V _{DC}	-
Page		15-42	15-43	15-43	15-43	15-44



Module		ADAM-5069	ADAM-5080	ADAM-5081	ADAM-5090/ ADAM-5091	ADAM-5095
Digital Input and Digital Output	Digital Input Channels	-	-	-	-	-
	Digital Output Channels	8 power relay (form A)	-	-	-	-
Counter (32-bit)	Channels	-	4	4/8	-	-
	Input Frequency	-	0.3 ~ 1000 Hz max. (frequency mode) 5000 Hz max. (counter mode)	5 Hz ~ 1 MHz max. (frequency mode) 1 MHz max. (counter mode)	-	-
	Mode	-	Frequency, Up/Down Counter, Bi-direction Counter	Frequency, Counter (Up/Down, Bi-direction, Up, A/B Phase)	-	-
Communication	Channels	-	-	-	4	2
	Type	-	-	-	RS-232	CAN
Isolation		-	1,000 V _{RMS}	2,500 V _{DC}	-	1,000 V _{DC}
Page		15-44	15-45	15-45	15-46	15-46



ADAM-5000 Controller Support Table

Vertrieb durch 
AMC – Analytik & Messtechnik GmbH Chemnitz
 Heinrich-Lorenz-Str. 55 Tel.: +49/371/38388-0
 09120 Chemnitz Fax: +49/371/38388-99
 E-Mail: info@amc-systeme.de Web: www.amc-systeme.de

Type		PAC			PC-based Controller		
System		ADAM-5560KW	ADAM-5510KW ADAM-5510EKW	ADAM-5510KW/TCP ADAM-5510EKW/TP	ADAM-5560CE	ADAM-5510/TCP ADAM-5510E/TCP	ADAM-5510M ADAM-5510E
Function	I/O Module	7-slot Micro PAC with Atom™ CPU	4/8-slot Softlogic Controller w/ RS-485	4/8-slot Softlogic Controller w/ Ethernet	7-slot PC-based Controller with Atom™ CPU	4/8-slot PC-based Controller with Ethernet	4/8-slot PC-based Controller with RS-485
Analog Input (AI)	ADAM-5013	•	•	•	•	•	•
	ADAM-5017	•	•	•	•	•	•
	ADAM-5017P	•	-	-	•	•	•
	ADAM-5017H	-	•	•	-	•	•
	ADAM-5017UH	•	-	-	•	•	•
	ADAM-5018	•	•	•	•	•	•
	ADAM-5018P	•	-	-	•	•	•
Analog Output (AO)	ADAM-5024	•	•	•	•	•	•
Digital Input (DI)	ADAM-5051	•	•	•	•	•	•
	ADAM-5051D	•	•	•	•	•	•
	ADAM-5051S	•	•	•	•	•	•
	ADAM-5052	•	•	•	•	•	•
	ADAM-5053S	•	-	-	•	-	-
Digital Output (DO)	ADAM-5056	•	•	•	•	•	•
	ADAM-5056D	•	•	•	•	•	•
	ADAM-5056S	•	•	•	•	•	•
	ADAM-5056SO	•	•	•	•	•	•
	ADAM-5057S	•	-	-	•	-	-
Digital I/O	ADAM-5050	•	•	•	•	•	•
	ADAM-5055S	•	•	•	•	•	•
Relay Output	ADAM-5060	•	•	•	•	•	•
	ADAM-5069	•	•	•	•	•	•
Counter/ Frequency	ADAM-5080	-	•	•	-	•	•
	ADAM-5081	•	-	-	•	•	•
Comm.	ADAM-5090	-	•	•	-	•	•
	ADAM-5091	•	-	-	•	-	-
	ADAM-5095	•	-	-	•	-	-
Motion	ADAM-5202	•	-	-	•	-	-
	ADAM-5240	•	-	-	•	-	-
SD	ADAM-5030	•	-	-	•	-	-

- 1 WebAccess+ Solutions
- 2 Machine Automation
- 3 Energy Automation
- 4 Building Automation Systems
- 5 Automation Software
- 6 Operator Panels
- 7 Automation Panel PCs
- 8 Industrial Panel Computers & Panel PC
- 9 Industrial Monitors
- 10 Industrial Wireless Solutions
- 11 Industrial Ethernet Solutions
- 12 Serial Device Servers and IP Gateways
- 13 Serial Communication Cards
- 14 Embedded Automation Computers
- 15 PACs
- 16 Compact PCI Systems
- 17 M2M I/O Modules
- 18 RS-485 I/O Modules



ADAM-5000 Remote I/O System Support Table

Vertrieb durch 
AMC – Analytik & Messtechnik GmbH Chemnitz
 Heinrich-Lorenz-Str. 55 Tel.: +49/371/38388-0
 09120 Chemnitz Fax: +49/371/38388-99
 E-Mail: info@amc-systeme.de Web: www.amc-systeme.de

Remote I/O System			ADAM-5000/485	ADAM-5000E	ADAM-5000L/TCP	ADAM-5000/TCP
Function	I/O Module	Description	4-slot Distributed DA&C for RS-485	8-slot Distributed DA&C for RS-485	4-slot Distributed DA&C for Ethernet	8-slot Distributed DA&C for Ethernet
Analog Input (AI)	ADAM-5013	3-ch RTD Input	•	•	•	•
	ADAM-5017	8-ch AI	•	•	•	•
	ADAM-5017P	8-ch AI w/ Independent Input Range	•	•	•	•
	ADAM-5017H	8-ch high Speed (1K) AI	•	•	•	•
	ADAM-5017UH	8-ch Ultra high Speed (200K) AI	•	•	•	•
	ADAM-5018	7-ch Thermocouple Input	•	•	•	•
	ADAM-5018P	7-ch Thermocouple Input w/ Independent Input Range	•	•	•	•
Analog Output (AO)	ADAM-5024	4-ch AO	•	•	•	•
Digital Input (DI)	ADAM-5051	16-ch DI	•	•	•	•
	ADAM-5051D	16-ch DI w/ LED	•	•	•	•
	ADAM-5051S	16-ch Isolated DI w/ LED	•	•	•	•
	ADAM-5052	8-ch Isolated DI w/ LED	•	•	•	•
Digital Output (DO)	ADAM-5056	16-ch DO	•	•	•	•
	ADAM-5056D	16-ch DO w/ LED	•	•	•	•
	ADAM-5056S	16-ch Isolated DO w/ LED	•	•	•	•
	ADAM-5056SO	16-ch Source Type Isolated DO w/ LED	•	•	•	•
Digital I/O	ADAM-5050	16-ch Universal Digital I/O	•	•	•	•
	ADAM-5055S	16-ch Isolated Digital I/O w/ LED	•	•	•	•
Relay Output	ADAM-5060	6-ch Relay Output	•	•	•	•
	ADAM-5069	8-ch Power Relay Output w/ LED	•	•	•	•
Counter/Frequency	ADAM-5080	4-ch Counter/Frequency	•	•	•	•
	ADAM-5081	4-ch High Speed Counter/Frequency	•	•	•	•



ADAM-5560CE ADAM-5560KW

**7-slot PC-based Controller with
Intel® Atom™ CPU**

**7-slot Micro PAC with
Intel® Atom™ CPU**

NEW



Features

- Integrated VGA port for local display of HMI software
- Can be operated with or without display/ keyboard/ mouse
- Remote monitoring through Web Server
- Remote maintenance via FTP Server
- Supports .NET class library in Windows CE
- Supports IEC-61131-3 SoftLogic Control Software
- Supports Modbus/RTU (Master/Slave) and Modbus/TCP (Server/Client)
- Supports SD Storage I/O Module
- Remote I/O expansion
- Supports ADAM-5000 I/O Modules

Vertrieb durch



AMC – Analytik & Messtechnik GmbH Chemnitz

Heinrich-Lorenz-Str. 55 Tel.: +49/371/38388-0
09120 Chemnitz Fax: +49/371/38388-99
E-Mail: info@amc-systeme.de Web: www.amc-systeme.de

Introduction

ADAM-5560 is a Programmable Automation Controller designed for control tasks which require Industrial PC computing performance with a PLC's robustness. The ADAM-5560 offers an Intel Atom CPU along with control specific features such as watchdog timer, battery backup RAM and deterministic I/O. The ADAM-5560KW features 5 standard IEC 61131-3 programming languages in Windows CE, so PLC users can develop control strategies with their own familiar programming languages. The powerful Multiprog KW Software and stable ProConOS have caused the ADAM-5560KW to become the best choice for a Programmable Automation Controller on the market today. Besides, the ADAM-5560CE offers an open platform that helps users to develop their own program using the common eVC and .NET programming environments to build compact and reliable control solutions. With the optional HMI Software and built-in VGA port, users no longer need to build additional SCADA PC's into their applications. This compact and powerful PAC is ideal for a variety of applications ranging from machine automation to SCADA applications.

Specifications

Control System

- **CPU** Intel Atom Z510P
- **I/O Capacity** 7 slots
- **LED Indicators** Power, User defined
- **Memory** 1 GB DDR2 SDRAM
1 MB Battery Backup
1 x CompactFlash® Card (Internal, 1GB)
- **Operating System** Windows® CE5.0
- **Real-time Clock** Yes
- **Watchdog Timer** Yes
- **Control Software** ADAM-5560CE: eVC and .NET library
ADAM-5560KW: KW Multiprog (development tool)
ProConOS (runtime Kernel)

Communications

- **Comm. Protocol** Modbus/RTU and Modbus/TCP
- **Medium** 2 x 10/100 Base-T w/ RJ-45
4 x RS-485 w/ DB9

Protection

- **Communication** RS-485 Isolation 1.5kV for COM1, COM3 and COM4
RS-485 Isolation 2.5kV for COM2
- **Power Reversal** Yes

Power

- *** Power Consumption** 17w @ 24 V_{DC} (Not include I/O modules)
- *** Power Input** 12 ~ 24 V_{DC}, ± 20%

General

- **Certification** CE, FCC Class A
- **Connectors** 1 x RS-232/485 (COM1)
1 x RS-485 (COM2)
1 x RS-232/485 (COM3)
1 x RS-232/485 (COM4)
2 x USB 2.0 ports (KB/Mouse via USB Ports)
1 x VGA (1024 x 768 Resolution)
- **Dimensions** 355 x 110 x 75 mm
- **Enclosure** ABS+PC
- **Mounting** DIN-rail, wall mount (panel mount)
- **Plug-in Screw Terminal** Accepts 0.5 mm² to 2.5 mm², 1 – #12 or 2 – #14 to #22 AWG

Environment

- **Humidity** 5% to 95%, non-condensing
- **Operating Temperature** 0 ~ 55°C (32 ~ 131°F)
- **Storage Temperature** -25 ~ 85°C (-13 ~ 185°F)

Ordering Information

- **ADAM-5560CE** 7-slot PC-based Controller with Intel Atom CPU
- **ADAM-5560KW** 7-slot Micro PAC with Intel Atom CPU
- **ADAM-5030** 2xSD slots and 2xUSB 2.0

- 1 WebAccess+ Solutions
- 2 Machine Automation
- 3 Energy Automation
- 4 Building Automation Systems
- 5 Automation Software
- 6 Operator Panels
- 7 Automation Panel PCs
- 8 Industrial Panel Computers & Panel PC
- 9 Industrial Monitors
- 10 Industrial Wireless Solutions
- 11 Industrial Ethernet Solutions
- 12 Serial Device Servers and IP Gateways
- 13 Serial Communication Cards
- 14 Embedded Automation Computers
- 15 PACs
- 16 Compact PCI Systems
- 17 M2M I/O Modules
- 18 RS-485 I/O Modules



ADAM-5510 Series

4/8 slots PC-based Controller



ADAM-5510E

ADAM-5510



Features

- Supports Modbus/RTU, Modbus/TCP Master and Slave function libraries
- Windows-based utility
- Optional support C Programming and IEC-61131-3 standard
- Complete set of I/O modules
- Built-in real-time clock and watchdog timer
- ROM-DOS operating system
- 4 serial communication ports
- Optional support Ethernet Interface with network function, such as Web Server, FTP Server and Email Alarm.
- 4 or 8 I/O slot expansion

Vertrieb durch



AMC – Analytik & Messtechnik GmbH Chemnitz

Heinrich-Lorenz-Str. 55 Tel.: +49/371/38388-0
09120 Chemnitz Fax: +49/371/38388-99
E-Mail: info@amc-systeme.de Web: www.amc-systeme.de

Introduction

The ADAM-5510 Series are ideal for PC-based data acquisition and control applications. They are compact, controllers with an Intel x86- based CPU running Datalight ROM-DOS. Built-in battery backup SRAM is the best choice for complex logic or data storage applications. For professional C/C++ programmers, the ADAM-5510 Series application programs may be written and compiled in Borland C++ 3.0, and downloaded to the controller.

For user who familiar with PLC programming environment, we provide the option for customer to use the KW softlogic which supports 5 standard IEC 61131-3 programming languages, including LD/FB/SFC/IL/ST.

Specifications

Control System

- **CPU** 80188, 16-bit microprocessor
- **I/O Slots** Optional 8 or 4 slots
- **LED Indicators** Power, CPU, communications and battery
- **Memory** Flash disk: 1 MB (960 KB for user applications)
Flash memory: 256 KB
Flash ROM: 256 KB
RAM: 640 KB (up to 384 KB with battery backup)
- **Memory (Softlogic version)** Flash disk: 512KB
Flash memory: 768KB
Flash ROM: 256KB
RAM: 640KB SRAM, 32KB with battery backup (ADAM-5510KW)
RAM: 768KB SRAM, 17KB with battery backup (ADAM-5510KW/TCP, ADAM-5510EKW/TP)
ROM-DOS (MS-DOS 6.22 Compatible)
- **Operating System** Yes
- **Real-time Clock** Yes
- **Watchdog Timer** Yes

Serial Communication

- **Max. Nodes** 256 (in RS-485 daisy-chain network)
- **Distance** 1.2 km (4,000 feet)
- **Speed** 1,200 bps ~ 115.2 kbps (9600, 19200, 38400 bps for Softlogic version)
- **Isolation** 2500 V_{DC} (COM2 only)

Ethernet Communication

- **Medium** Cat.5 cable with RJ-45 connector
- **Distance** 100 m
- **Speed** 10/100Base-T

Power

- **Power Consumption** 4 W @ 24 V_{DC} (not including I/O modules)
- **Power Input** Unregulated 10 ~ 30 V_{DC}
- **Isolation** 3000 V_{DC}
- **Reverse Protection** Yes

Software

- **ROM DOS version** C library for Borland C++ 3.0
- **Softlogic version** Development tool : KW Multiprog
Runtime kernel : ProConOS

General

- **Certifications** CE, FCC Class A
- **Connectors** COM1 : DB9-M
COM2 : Screw terminal(RS-485)
COM3 : DB9-F (RS-232/Programming)
COM4 : DB9-M (RS-232/485)
Power : Screw terminal
LAN : RJ-45 (option)
- **Dimensions** 4-slot: 231 x 110 x 75 mm
8-slot: 355 x 110 x 75 mm
- **Enclosure** ABS+PC
- **Mounting** DIN-rail, stack, wall

Environment

- **Humidity** 5 ~ 95%, non-condensing
- **Operating Temperature** -10 ~ 70°C (14 ~ 158°F)
- **Storing Temperature** -25 ~ 85°C (-13 ~ 185°F)

Ordering Information

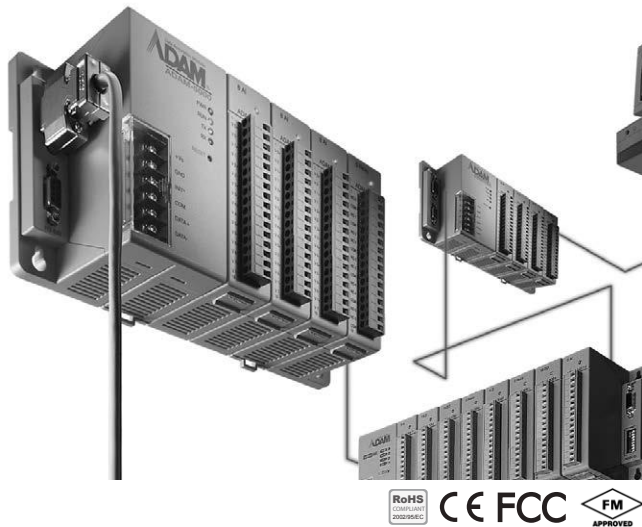
- **ADAM-5510M** 4-slot PC-based Controller
- **ADAM-5510E** 8-slot PC-based Controller
- **ADAM-5510/TCP** 4-slot PC-based Controller with Ethernet
- **ADAM-5510E/TCP** 8-slot PC-based Controller with Ethernet
- **ADAM-5510KW** 4-slot Softlogic Controller
- **ADAM-5510KW/TCP** 4-slot Softlogic Controller with Ethernet
- **ADAM-5510EKW/TP** 8-slot Softlogic Controller with Ethernet
- **MPROG-PRO535E** KW Multiprog Pro v5.35 (128k bytes I/O, Win7 support)



ADAM-5000/485 ADAM-5000E

**4-slot Distributed DA&C System
for RS-485**

**8-slot Distributed DA&C System
for RS-485**



Features

- RS-485 communication for easy installation and networking
- 4 or 8 slots for up to 128 points data monitoring card control in one module
- Extensive software support, includes windows DLL drivers, OCX drivers, OPC server and popular HMI/SCADA software drivers
- Seamlessly integrated with easy-to-use ADAMView data acquisition software
- Supports ADAM ASCII protocol or Modbus®/RTU protocol
- Supports Modbus/RTU protocol with user-defined Modbus address

Vertrieb durch



AMC – Analytik & Messtechnik GmbH Chemnitz

Heinrich-Lorenz-Str. 55 Tel.: +49/371/38388-0
09120 Chemnitz Fax: +49/371/38388-99
E-Mail: info@amc-systeme.de Web: www.amc-systeme.de

Introduction

The ADAM-5000/485 and ADAM-5000E systems conform to the EIA RS-485 communication standard. This is the industry's most widely used, balanced, bidirectional transmission line standard. RS-485 was specifically developed for industrial applications to transmit and receive data at high rates over long distances.

Specifications

Control System

- **CPU** 16-bit 80188 microprocessor
- **I/O Slots** ADAM-5000/485: 4
ADAM-5000E: 8
- **LED Indicators** Power, CPU, communications
- **Watchdog Timer** 1.6 sec. (System)

Communications

- **Command Format** ASCII command/response protocol, Modbus/RTU
- **Communication Distance** RS-485: 1.2 km (4000 feet)
- **Data Format** Asynchronous. 1 start bit, 8 data bits, 1 stop bit, no parity
- **Network Protocols** Programming link: RS-232 (3-wire: TX, RX, GND)
Communication: RS-485 (2-wire)
- **Reliability Check** Communication error checking with checksum
- **Max. Nodes** 128 (in RS-485 daisy-chain network)
- **Speeds (kbps)** 1.2, 2.4, 4.8, 9.6, 19.2, 38.4, 57.6, and 115.2

Power

- **Power Consumption** 3 W @ 24 Vdc (ADAM-5000/485)
(not including I/O modules)
4.0 W @ 24 Vdc (ADAM-5000E)
(not including I/O modules)
- **Power Input** Unregulated 10 ~ 30 V_{DC}

Software

- **Driver Support Windows DLL, OPC Server, Wonderware InTouch, Intellution, iFIX, Citect, Advantech Studio, ADAMView**
- **C and .NET Class Library**

Protection

- **Communication Line Isolation** 2,500 V_{DC} (ADAM-5000/485)
3,000 V_{DC} (ADAM-5000E)
- **I/O Module Isolation** 3,000 V_{DC}
- **Transient Protection** RS-485 communication lines, power input
- **Power Reversal Protection** Yes

General

- **Certification** CE, FM
- **Connectors** 1 x DB9-M/DB9-F/screw terminal for RS-485 (communication)
1 x DB9-F for RS-232 (configuration)
1 x Screw-terminal for power input
- **Dimensions (WxHxD)** 4-slot: 231 x 110 x 75 mm
8-slot: 355 x 110 x 75 mm
- **Enclosure** ABS+PC
- **Mounting** DIN-rail, wall, rack (with mounting kit)

Environment

- **Humidity** 5 ~ 95%, non-condensing
- **Operating Temperature** -10 ~ 70°C (14 ~ 158°F)
- **Storing Temperature** -25 ~ 85°C (-13 ~ 185°F)

Ordering Information

- **ADAM-5000/485** 4-slot Distributed DA & C System for RS-485
- **ADAM-5000E** 8-slot Distributed DA & C System for RS-485

1	WebAccess+ Solutions
2	Machine Automation
3	Energy Automation
4	Building Automation Systems
5	Automation Software
6	Operator Panels
7	Automation Panel PCs
8	Industrial Panel Computers & Panel PC
9	Industrial Monitors
10	Industrial Wireless Solutions
11	Industrial Ethernet Solutions
12	Serial Device Servers and IP Gateways
13	Serial Communication Cards
14	Embedded Automation Computers
15	PACs
16	Compact PCI Systems
17	M2M I/O Modules
18	RS-485 I/O Modules



ADAM-5000L/TCP

ADAM-5000/TCP

**4-slot Distributed DA&C System
for Ethernet**

**8-slot Distributed DA&C System
for Ethernet**



ADAM-5000/TCP

ADAM-5000L/TCP



Features

- ARM 32-bit RISC CPU
- 10/100Base-T auto-negotiation high-speed communication port
- Supports Modbus/TCP for easy integration
- Supports UDP event handling function
- Up to 100 m communication distance w/o repeater
- Allows remote configuration via Ethernet
- Allows concurrent access for 8 host PCs
- 4 I/O slots for up to 64 points and 8 I/O slots for up to 128 points data monitoring and control
- 1500 V_{DC} isolation for Ethernet communication
- Built-in watchdog timer for system auto-reset
- Windows utility
 - I/O modules configuration and calibration
 - Network auto searching
 - Data stream setting
 - Current status monitoring and alarm trigger
- Provides C and .NET class library to develop applications

Introduction

The ADAM-5000L/TCP and ADAM-5000/TCP are both Ethernet-based I/O systems. Without a repeater, the ADAM-5000L/TCP and ADAM-5000/TCP can cover a communication distance up to 100 m. This allows remote configuration via Ethernet and eight PCs can simultaneously access the data. The ADAM-5000L/TCP and ADAM-5000/TCP are the solutions for easy configuration and efficient management. It is an ideal and cost-effective solution for eAutomation architecture.

Specifications

Control System

- CPU** 32-bit ARM RISC
- I/O Slots** ADAM-5000L/TCP: 4
ADAM-5000/TCP: 8
- Memory** Flash ROM: 512 KB
RAM: 4 MB
- Operating System** Real-time OS
- LED Indicators** Power (3.3 V, 5 V)
CPU
Communication (Link, Active, 10/100 Mbps, Tx, Rx)
Battery

Communications (Ethernet)

- Data Transfer Rate** Up to 100 Mbps
- Event Response Time** < 5 ms
- Interface** 1 x 10/100Base-T (RJ-45)
- Wiring** UTP, category 5 or greater

Communications (Serial)

- Comm. Distance** RS-485: 1.2 km (4000 feet)
RS-232: 15 m
- Comm. Protocol** Modbus/RTU
- Data Transfer Rate** Up to 115.2 kbps
- Interface** 1 x DB9-M for RS-485
1 x DB9-F for RS-485
1 x DB9-F for RS-232
- Max. Nodes** 12 (in RS-485 daisy-chain network for Remote I/O connection)

Power

- Power Consumption** 4.0 W @ 24 Vdc (ADAM-5000L/TCP)
(not including I/O modules)
5.0 W @ 24 Vdc (ADAM-5000/TCP)
(not including I/O modules)
- Power Input** Unregulated 10 ~ 30 V_{DC}

Software

- C and .NET Class Library**
- Windows Utility** Network setting, I/O configuration & calibration, data stream, alarm setting
- Modbus/TCP OPC Server**

Protection

- Communication Line Isolation** 3.000 V_{DC}
- I/O Module Isolation** 3.000 V_{DC}
- LAN Communication** 1.500 V_{DC}
- Overvoltage Protection** Yes
- Power Reversal Protection** Yes

General

- Certification** CE, FCC class A
- Connectors** 1 x DB9-M/DB9-F/screw terminal for RS-485 (communication)
1 x DB9-F for RS-232 (internal use)
1 x Screw-terminal for power input
1 x RJ-45 for LAN
- Dimensions (W x H x D)** ADAM-5000L/TCP: 231 x 110 x 75 mm
ADAM-5000/TCP: 355 x 110 x 75 mm
- Enclosure** ABS+PC
- Mounting** DIN-rail, wall

Environment

- Humidity** 5 ~ 95%, non-condensing
- Operating Temperature** - 10 ~ 70°C (14 ~ 158°F)
- Storage Temperature** - 25 ~ 85°C (-13 ~ 185°F)

Ordering Information

- ADAM-5000L/TCP** 4-slot Ethernet-based Distributed DA & C System
- ADAM-5000/TCP** 8-slot Ethernet-based Distributed DA & C System

Vertrieb durch **AMC**
AMC – Analytik & Messtechnik GmbH Chemnitz
 Heinrich-Lorenz-Str. 55 Tel.: +49/371/38388-0
 09120 Chemnitz Fax: +49/371/38388-99
 E-Mail: info@amc-systeme.de Web: www.amc-systeme.de



ADAM-5013 ADAM-5017 ADAM-5017P

Vertrieb durch **AMC**
AMC – Analytik & Messtechnik GmbH Chemnitz
 Heinrich-Lorenz-Str. 55 Tel.: +49/371/39388-0
 09120 Chemnitz Fax: +49/371/39388-99
 E-Mail: info@amc-systeme.de Web: www.amc-systeme.de

3-ch RTD Input Module 8-ch Analog Input Module 8-ch Analog Input Module with Independent Input Range



Specifications

General

- **Certification** CE
- **Connectors** 1 x Plug-in screw terminal (# 14 ~ 22 AWG)
- **Enclosure** ABS+PC
- **Power Consumption** 1.1 W (max.)

RTD Input

- **Accuracy** ±0.1% or better
- **Bandwidth** 13.1 Hz @ 50 Hz
15.72 Hz @ 60 Hz
- **Channels** 3
- **CMR @ 50/60 Hz** 150 dB
- **Input Connections** 2, 3 or 4 wire
- **Input Impedance** 2 MΩ
- **Input Type** PT100 or Ni RTD
- **NMR @ 50/60 Hz** 100 dB
- **Resolution** 16-bit
- **RTD Types and Temperature Ranges**

IEC RTD 100 ohms			
Pt	-100°C	to	+100°C
			a=0.00385
Pt	0°C	to	+100°C
			a=0.00385
Pt	0°C	to	+200°C
			a=0.00385
Pt	0°C	to	+600°C
			a=0.00385
JIS RTD 100 ohms			
Pt	-100°C	to	+100°C
			a=0.00392
Pt	0°C	to	+100°C
			a=0.00392
Pt	0°C	to	+200°C
			a=0.00392
Pt	0°C	to	+600°C
			a=0.00392
Ni RTD			
Ni	-80°C	to	+100°C
			a=0.00392
Ni	0°C	to	+100°C
			a=0.00392
- **Sampling Rate** 10 samples/sec. (total)
- **Span Drift** ±0.01°C/°C
- **Zero Drift** ±0.015°C/°C

Protection

- **Isolation Voltage** 3000 V_{DC}

Ordering Information

- **ADAM-5013** 3-ch RTD Input Module

Specifications

General

- **Certification** CE, FM
- **Connectors** 1 x Plug-in screw terminal (# 14 ~ 22 AWG)
- **Enclosure** ABS+PC
- **Power Consumption** 1.25 W (max.)

Analog Input

- **Accuracy** Voltage mode: ±0.1% or better
Current mode: ±0.2% or better
- **Bandwidth** 13.1 Hz @ 50 Hz
15.72 Hz @ 60 Hz
- **Channels** 8 differential
- **CMR @ 50/60 Hz** 92 dB min.
- **Input Impedance** Voltage: 2 MΩ
Current: 120Ω (Build-in 120 Ω resistor for Current input)
- **Input Range** ±150 mV, ±500 mV, ±1 V, ±5 V, ±10 V; ±20 mA
- **Resolution** 16-bit
- **Sampling Rate** 10 samples/sec. (total)
- **Span Drift** ±25 PPM/°C
- **Zero Drift** ±6 μV/°C

Protection

- **Isolation Voltage** 3,000 V_{DC}
- **Fault and Overvoltage Protection** Withstands overvoltage up to ±35 V

Note: The voltage difference between any two pins must not exceed ±15 V

Ordering Information

- **ADAM-5017** 8-ch Analog Input Module

Specifications

General

- **Certification** CE, FCC Class A
- **Connectors** 1 x Plug-in terminal block (#14 ~ 22 AWG)
- **Enclosure** ABS+PC
- **Power Consumption** 1.25 W (max.)

Analog Input

- **Accuracy** Voltage mode: ±0.1% or better
Current mode: ±0.2% or better
- **Channels** 8 (differential, each channel can be configured with different range)
- **CMR @ 50/60 Hz** 92 dB min.
- **Input Impedance** Voltage: 800K Ω
Current: 120 Ω (Build-in 120 Ω resistor for Current Input)
- **Input Range** 0 ~ 150 mV, 0 ~ 500 mV, 0 ~ 1 V, 0 ~ 5 V, 0 ~ 10 V, 0 ~ 15 V, ±150 mV, ±500 mV, ±1 V, ±5 V, ±10 V, ±15 V, ±20 mA, 4 ~ 20 mA
- **Resolution** 16-bit
- **Sampling Rate** 10 samples/sec. (total)
- **Span Drift** ±25 ppm/°C
- **Zero Drift** ±6 μV/°C
- **High Common Mode** 200 V_{DC}

Protection

- **Over Voltage Protection**
- **Built-in TVS/ESD Protection**
- **Isolation Voltage** 3,000 V_{DC}

Note: Does not support ADAM-5510KW series

Ordering Information

- **ADAM-5017P** 8-ch Analog Input Module w/ Ind. Input Range

- 1 WebAccess+ Solutions
- 2 Machine Automation
- 3 Energy Automation
- 4 Building Automation Systems
- 5 Automation Software
- 6 Operator Panels
- 7 Automation Panel PCs
- 8 Industrial Panel Computers & Panel PC
- 9 Industrial Monitors
- 10 Industrial Wireless Solutions
- 11 Industrial Ethernet Solutions
- 12 Serial Device Servers and IP Gateways
- 13 Serial Communication Cards
- 14 Embedded Automation Computers
- 15 PACs
- 16 Compact PCI Systems
- 17 M2M I/O Modules
- 18 RS-485 I/O Modules



ADAM-5017UH

ADAM-5018

ADAM-5018P

8-ch Ultra High Speed Analog Input Module

7-ch Thermocouple Input Module

7-ch Thermocouple Input Module with Independent Input Range

Vertrieb durch **AMC**
AMC – Analytik & Messtechnik GmbH Chemnitz
 Heinrich-Lorenz-Str. 55 Tel.: +49/371/38388-0
 09120 Chemnitz Fax: +49/371/38388-99
 E-Mail: info@amc-systeme.de Web: www.amc-systeme.de



ADAM-5017UH



ADAM-5018



ADAM-5018P

Specifications

General

- Certification** CE
- Connectors** 1 x Plug-in screw terminal (# 14 ~ 22 AWG)
- Enclosure** ABS+PC
- Power Consumption** 2.2 W (max.)

Analog Input

- Accuracy** ±0.1% or better
- Bandwidth** 200 kHz
- Channels** 8 differential
- Differential Non-linear** ±1 LSB
- Input Impedance** Voltage: 2 MΩ
Current: 120 Ω (Build-in)
- Integral Non-linear** ±1 LSB
- Input Range** ±10 V, +0 ~ 10 V, 0 ~ 20 mA, +4 ~ 20 mA
- Low pass filter** Configured by User
- Resolution** 12-bit
- Sampling Rate** Depends on base unit
ADAM-5000/485 & 5000E: 100 Samples/sec max (Total): one ADAM-5017UH installed
ADAM-5000/TCP & 5000L/TCP: 100 Samples/sec max (Total): one ADAM-5017UH installed
ADAM-5510 : 200K Samples/sec max (Single Channel): one ADAM-5017UH installed
ADAM-5550 & ADAM-5560: 1K Samples/sec max(single channel): one ADAM-5017UH installed
*Depending on the performance of client server or controller
- Signal Input Bandwidth** 200 kHz for both voltage and current inputs

Protection

- Isolation Voltage** 3,000 V_{DC}
- Note:**
 1) The voltage difference between any two pins must not exceed 15 V
 2) Distinct range settings allowed on each channel
 Note: Not support ADAM-5510KW series

Ordering Information

- ADAM-5017UH** 8-ch Ultra High Speed Analog Input Module

Specifications

General

- Certification** CE, FM
- Connectors** 1 x Plug-in screw terminal (# 14 ~ 22 AWG)
- Enclosure** ABS+PC
- Power Consumption** 0.63 W (max.)

Thermocouple Input

- Accuracy** ±0.1% or better
- Bandwidth** 13.1 Hz @ 50 Hz
15.72 Hz @ 60 Hz
- Channels** 7 differential
- CMR @ 50/60 Hz** 92 dB min
- Input Impedance** 2 MΩ
- Input Range** ±15 mV, ±50 mV, ±100 mV, ±500 mV, ±1 V, ±2.5 V, ±20 mA
- Input Type** mV, V, mA, thermocouple
- Resolution** 16-bit
- Sampling Rate** 10 samples/sec. (total)
- Span Drift** ±25 PPM/°C
- Zero Drift** ±6 µV/°C
- T/C Type and Temperature Range**

J	0°	~	760°C
K	0°	~	1,370°C
T	-100°	~	400°C
E	0°	~	1,000°C
R	500°	~	1,750°C
S	500°	~	1,750°C
B	500°	~	1,800°C

Protection

- Fault and Overvoltage Protection** Withstands overvoltage up to ±35 V
- Isolation Voltage** 3,000 V_{DC}

Ordering Information

- ADAM-5018** 7-ch Thermocouple Input Module
- ADAM-5018SK** ADAM-5018 with CJC kit/external

Specifications

General

- Certification** CE, FCC class A
- Connectors** 1 x Plug-in screw terminal (# 14 ~ 22 AWG)
- Enclosure** ABS+PC
- Power Consumption** 0.63 W (max.)

Thermocouple Input

- Accuracy** Voltage mode: ±0.1% or better
Current mode: ±0.2% or better
- Bandwidth** 13.1 Hz @ 50 Hz
15.72 Hz @ 60 Hz
- Channels** 7 (differential, each channel can be configured with different range)
- CMR @ 50/60 Hz** 92 dB min
- Input Impedance** 20 MΩ. (Build-in 120 Ω. Register for Current Input)
- Input Range and Types**

Thermocouple			
J	0	~	760°C
K	0	~	1,370°C
T	-100	~	400°C
E	0	~	1,000°C
R	500	~	1,750°C
S	500	~	1,750°C
B	500	~	1,800°C
Current			
Voltage			
±20 mA, 4 ~ 20 mA			
±15 mV (0.2%), ±50 mV, ±100 mV, ±500 mV			
±1 V, ±2.5 V			
- Resolution** 16-bit
- Sampling Rate** 10 samples/sec. (total)
- Span Drift** ±25 PPM/°C
- Zero Drift** ±6 µV/°C
- High Common Mode** 200 V_{DC}

Protection

- Fault and Overvoltage Protection** Withstands overvoltage up to ±35 V
- Isolation Voltage** 3,000 V_{DC}
- Filter function** Yes
- Built-in TVS/ESD Protection**

Note: Not support ADAM-5510KW series

Ordering Information

- ADAM-5018P** 7-ch Thermo. Input Module w/ Ind. Input Range



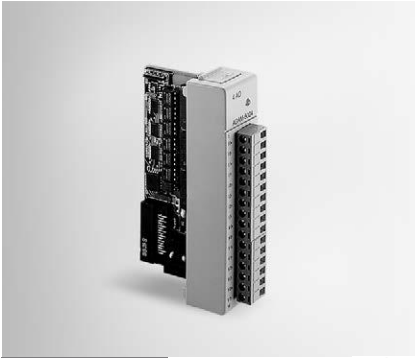
ADAM-5024 ADAM-5050 ADAM-5051/D/S

Vertrieb durch **AMC**
AMC – Analytik & Messtechnik GmbH Chemnitz
 Heinrich-Lorenz-Str. 55 Tel.: +49/371/38388-0
 09120 Chemnitz Fax: +49/371/38388-99
 E-Mail: info@amc-systeme.de Web: www.amc-systeme.de

4-ch Analog Output Module

16-ch Universal Digital I/O Module

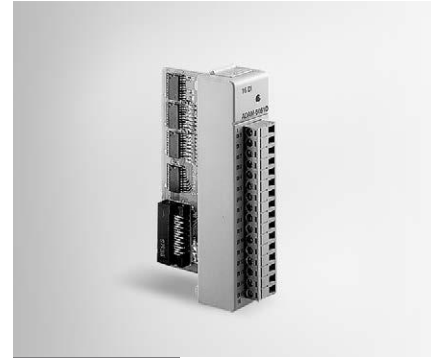
16-ch Digital Input Module



ADAM-5024



ADAM-5050



ADAM-5051
ADAM-5051D
ADAM-5051S

Specifications

General

- **Certification** CE, FM
- **Connectors** 1 x Plug-in screw terminal (# 14 ~ 22 AWG)
- **Enclosure** ABS+PC
- **Power Consumption** 2.9 W (max.)

Analog Output

- **Accuracy** ±0.1% of FSR for current output
±0.2% of FSR for voltage output
- **Channels** 4
- **Current Load Resistor** 0 ~ 500 Ω (source)
- **Output Type** mA, V
- **Output Range** 0 ~ 20 mA, 4 ~ 20 mA, 0 ~ 10 V
- **Programmable Output Slope** 0.125 ~ 128.0 mA/sec.
0.0625 ~ 64.0 V/sec.
- **Resolution** 12-bit
- **Resolution** ±0.015% of FSR
- **Span Temperature Coefficient** ±25 PPM/°C
- **Zero Drift** Voltage: ±30 μV/°C
Current: ±0.2 μA/°C

Protection

- **Isolation Voltage** 3,000 V_{DC}

Ordering Information

- **ADAM-5024** 4-ch Analog Output Module

Specifications

General

- **Certification** CE, FM
- **Connectors** 1 x Plug-in screw terminal (# 14 ~ 22 AWG)
- **Enclosure** ABS+PC
- **Power Consumption** 1.2 W (max.)

Digital I/O

- **Channels** 16
- **Channel I/O Type** Bit-wise selectable by DIP switch
- **Digital Input** Dry Contact:
Logic level 0: close to GND
Logic level 1: open
Wet Contact:
Logic level 0: 2 V max.
Logic level 1: 4 ~ 30 V
- **Digital Output** Open collector to 30 V,
100 mA and 450 mW max. load
- **Power Dissipation** 300 mW for each channel

Ordering Information

- **ADAM-5050** 16-ch Universal Digital Input/Output Module

Specifications

General

- **Certification** CE
- **Connectors** ADAM-5051/5051D: 1 x Plug-in screw terminal (# 14 ~ 22 AWG)
ADAM-5051S: 1 x Plug-in screw terminal (# 14 ~ 28 AWG)
- **Enclosure** ABS+PC

LED Indicators

- ADAM-5051D On: Input logic level 1
Input floating
Off: Input logic level 0
- ADAM-5051S On: Active
Off: Inactive

Power Consumption

- ADAM-5051: 0.53 W (max.)
- ADAM-5051D: 0.84 W (max.)
- ADAM-5051S: 0.8 W (max.)

Digital Input

- **Circuit Type** Pull-up current: 0.5 mA (Source Type) -only for ADAM-5051/5051D
- **Channels** 16
- **Input Voltage** ADAM-5051/5051D: 30 V max
ADAM-5051S: 50 V max
- **Logic Level** ADAM-5051/5051D Logic level 0: 1 V max.
Logic level 1: 3.5 ~ 30 V
ADAM-5051S Logic level 0: 3 V max.
Logic level 1: 10 ~ 50 V

Protection (Only for ADAM-5051S)

- **Optical Isolation** 2,500 V_{DC}
- **Overvoltage Protection** 70 V_{DC}

Ordering Information

- **ADAM-5051** 16-ch Digital Input Module w/ LED
- **ADAM-5051D** 16-ch Digital Input Module w/ LED
- **ADAM-5051S** 16-ch Isolated Digital Input Module w/ LED

- 1 WebAccess+ Solutions
- 2 Machine Automation
- 3 Energy Automation
- 4 Building Automation Systems
- 5 Automation Software
- 6 Operator Panels
- 7 Automation Panel PCs
- 8 Industrial Panel Computers & Panel PC
- 9 Industrial Monitors
- 10 Industrial Wireless Solutions
- 11 Industrial Ethernet Solutions
- 12 Serial Device Servers and IP Gateways
- 13 Serial Communication Cards
- 14 Embedded Automation Computers
- 15 PACs
- 16 Compact PCI Systems
- 17 M2M I/O Modules
- 18 RS-485 I/O Modules



ADAM-5052 ADAM-5053S ADAM-5055S

8-ch Isolated Digital Input Module

32-ch Isolated Digital Input Module

16-ch Isolated Digital I/O Module with LED



ADAM-5052

RoHS
COMPLIANT
2002/95/EC

CE FCC FM
APPROVED



ADAM-5053S

RoHS
COMPLIANT
2002/95/EC

CE FCC



ADAM-5055S

RoHS
COMPLIANT
2002/95/EC

CE FCC

Specifications

General

- **Certification** CE, FM
- **Connectors** 1 x Plug-in screw terminal (# 14 ~ 22 AWG)
- **Enclosure** ABS+PC
- **Power Consumption** 0.27 W (max.)

Digital Input

- **Channels** 8
- **Input Resistance** 3 k Ω /0.5 W
- **Logic Level** Logic level 0: 1 V max
Logic level 1: 3.5 ~ 30 V

Protection

- **Isolation Voltage** 5000 V_{RMS}

Ordering Information

- **ADAM-5052** 8-ch Isolated Digital Input Module

Specifications

General

- **Certification** CE, FCC class A
- **Connector** 40 pin
- **Enclosure** ABS+PC
- **Power Consumption** 1 W (max.)

Digital Input

- **Channels** 32
- **Channel I/O Type** DI
24 V_{DC} (Sink/Source)

Logic Level

- **Wet Contact** Logic level 0: 10 V max
Logic level 1: 19 ~ 35 V

Protection

- **Isolation Voltage** 2,500 V_{DC}
- **Overvoltage Protection** 35 V_{DC}

Note: only for ADAM-5550 & 5560 Series

Ordering Information

- **ADAM-5053S** 32-ch Digital Input Module
- **ADAM-3920** 20-pin Flat Cable Wiring Board
- **PCL-10220** 40-pin IDC to two 20-pin IDC cable, 1 m

Specifications

General

- **Certification** CE
- **Connectors** 1 x Plug-in screw terminal (# 14 ~ 28 AWG)
- **Enclosure** ABS+PC
- **LED Indicators** On: Active
Off: Inactive
- **Power Consumption** 0.68 W (max.)

Digital I/O

- **Channels** 16
- **Channel I/O Type** 8 DO, 8 DI
- **Digital Input** Dry contact:
Logic level 0: open
Logic level 1: close to GND
Wet contact:
Logic level 0: 3 V max.
Logic level 1: 10 ~ 50 V
- **Digital Output** Open collector to 40 V
200 mA max. load
- **Power Dissipation** Channel : 1 W max.
Total : 2.2 W
(8 channels)

Protection

- **Isolation Voltage** 2,500 V_{DC}
- **Overvoltage Protection** 70 V_{DC} (DI only)

Ordering Information

- **ADAM-5055S** 16-ch Isolated Digital I/O Module with LED

Vertrieb durch 
AMC – Analytik & Messtechnik GmbH Chemnitz
 Heinrich-Lorenz-Str. 55 Tel.: +49/371/38388-0
 09120 Chemnitz Fax: +49/371/38388-99
 E-Mail: info@amc-systeme.de Web: www.amc-systeme.de



ADAM-5056/D/S

ADAM-5056SO

ADAM-5057S

16-ch Digital Output Module
16-ch Source-type Isolated
Digital Output Module with LED

32-ch Isolated Digital Output Module



ADAM-5056
ADAM-5056D
ADAM-5056S

RoHS COMPLIANT
CE FCC



ADAM-5056SO

RoHS COMPLIANT
CE FCC



ADAM-5057S

RoHS COMPLIANT
CE FCC

Specifications

General

- Certification** CE, FCC class A (ADAM-5056S only)
- Connectors**
ADAM-5056/5056D 1 x Plug-in screw terminal (# 14 ~ 22 AWG)
ADAM-5056S 1 x Plug-in screw terminal (# 14 ~ 28 AWG)
- Enclosure** ABS+PC
- LED Indicators**
ADAM-5056D On: Output logic level 1
Off: Output logic level 0
ADAM-5056S On: Active
Off: Inactive
- Power Consumption** ADAM-5056: 0.53 W (max.)
ADAM-5056D: 0.84 W (max.)
ADAM-5056S: 0.6 W (max.)

Digital Output

- Channels** 16
- Digital Output**
ADAM-5056/5056D Open collector to 30 V, 100 mA max. load
ADAM-5056S Open collector to 40 V, 200 mA max. load (sink)
- Operating Voltage** ADAM-5056/5056D: 30 V max
- Power Dissipation** 300 mW for each channel
- Protection (Only for ADAM-5056S)**
-Optical Isolation 2500 V_{DC}
-Overvoltage Protection 70 V_{DC}
-Power Dissipation 300 mW

Ordering Information

- ADAM-5056** 16-ch Digital Output Module
- ADAM-5056D** 16-ch Digital Output Module with LED
- ADAM-5056S** 16-ch Sink Type Iso. DO Module w/ LED

Specifications

General

- Certification** CE, FCC class A
- Connectors** 1 x Plug-in screw terminal (# 14 ~ 28 AWG)
- Enclosure** ABS+PC
- LED Indicator** On: Active
Off: Inactive
- Power Consumption** 0.6 W (Max.)

Digital Output

- Channels** 16
- Digital Output** 10 ~ 35 V_{DC}
- Current** 200 mA max. (per channel)
Channel : 1 W max.
- Power Dissipation** Total : 2.2 W

Protection

- Optical Isolation** 2,500 V_{DC}
- Overvoltage Protection** 70 V_{DC}

Ordering Information

- ADAM-5056SO** 16-ch Source Type Iso. DO Module w/ LED

Vertrieb durch **AMC**

AMC – Analytik & Messtechnik GmbH Chemnitz

Heinrich-Lorenz-Str. 55 Tel.: +49/371/38388-0
09120 Chemnitz Fax: +49/371/38388-99
E-Mail: info@amc-systeme.de Web: www.amc-systeme.de

Specifications

General

- Certification** CE, FCC class A
- Connectors** 1 x 40 pin (wiring line)
- Enclosure** ABS+PC
- LED Indicator** On: Active
Off: Inactive
- Power Consumption** 1W (Max.)

Digital Output

- Channels** 32
- Digital Output** Must connect with 2 units of ADAM-3920R

Protection

- Optical Isolation** 2,500 V_{DC}
- Overvoltage Protection** 70 V_{DC}

Relay Spec. of ADAM-3920R

- Contact Rating** 10A @ 250 V_{AC}
10A @ 30 V_{DC}
- Contact Resistance** 100 mΩ
- Operation Time** 15 ms
- Relay Type SPST** (Form A)
- Release Time** 5 ms max
- Life Expectancy** 1.7 x 10⁶ at related load
- Insulation Resistance** 1GΩ @ 500 V_{DC}
- Power Input** +24 V_{DC}
- Mounting** DIN 35 rail, wall, rack (with mounting kit)

Note: ADAM-5057S must connect with 2 units of ADAM-3920R via PCL-10220

Note: only for ADAM-5550 & 5560 Series

Ordering Information

- ADAM-5057S** 32-ch Digital Output Module
- ADAM-3920R** 20-pin Flat Cable Wiring Relay Board
- PCL-10220** 40-pin IDC to two 20-pin IDC cable, 1m

1
WebAccess+ Solutions

2
Machine Automation

3
Energy Automation

4
Building Automation Systems

5
Automation Software

6
Operator Panels

7
Automation Panel PCs

8
Industrial Panel Computers & Panel PC

9
Industrial Monitors

10
Industrial Wireless Solutions

11
Industrial Ethernet Solutions

12
Serial Device Servers and IP Gateways

13
Serial Communication Cards

14
Embedded Automation Computers

15
PACs

16
Compact PCI Systems

17
M2M I/O Modules

18
RS-485 I/O Modules



ADAM-5060

ADAM-5069

6-ch Relay Output Module

8-ch Power Relay Output Module with LED



Vertrieb durch **AMC**
AMC – Analytik & Messtechnik GmbH Chemnitz
 Heinrich-Lorenz-Str. 55 Tel.: +49/371/38388-0
 09120 Chemnitz Fax: +49/371/38388-99
 E-Mail: info@amc-systeme.de Web: www.amc-systeme.de

ADAM-5060

RoHS
 COMPLIANT
 2002/95/EC

CE FCC

ADAM-5069

RoHS
 COMPLIANT
 2002/95/EC

CE FCC

Specifications

General

- **Certification** CE
- **Connectors** 1 x Plug-in screw terminal (# 14 ~ 22 AWG)
- **Enclosure** ABS+PC
- **Power Consumption** 1.8 W (max.)

Relay Output

- **Breakdown Voltage** 500 V_{AC} (50/60 Hz)
- **Channels** 2 x form A, 4 x form C
- **Contact Rating** AC: 125 V @ 0.6 A
 250 V @ 0.3 A
 DC: 30 V @ 2 A
 110 V @ 0.6 A
- **Insulation Resistance** 1 GΩ min. @ 500 V_{DC}
- **Relay Off Time (typical)** 2 ms
- **Relay On Time (typical)** 3 ms
- **Total Switching Time** 10 ms

Ordering Information

- **ADAM-5060** 6-ch Relay Output Module

Specifications

General

- **Certification** CE, FCC class A
- **Connectors** 1 x Plug-in screw terminal (# 14 ~ 22 AWG)
- **Enclosure** ABS+PC
- **LED Indicator** On: Active
 Off: Inactive
- **Power Consumption** 2.2 W (max.)

Relay Output

- **Breakdown Voltage** 750 V_{AC} (50/60 Hz)
- **Channels** 8 x form A
- **Contact Rating** AC: 250 V @ 5 A
 DC: 30 V @ 5 A
- **Insulation Resistance** 1 GΩ @ 500 V_{DC}
- **Relay On Time (typical)** 5 ms
- **Relay Off Time (typical)** 5.6 ms

Ordering Information

- **ADAM-5069** 8-ch Power Relay Output Module w/ LED



ADAM-5080 ADAM-5081

4-ch Counter/Frequency Module

4-ch High Speed Counter/Frequency Module



Vertrieb durch **AMC**
AMC – Analytik & Messtechnik GmbH Chemnitz
 Heinrich-Lorenz-Str. 55 Tel.: +49/371/38388-0
 09120 Chemnitz Fax: +49/371/38388-99
 E-Mail: info@amc-systeme.de Web: www.amc-systeme.de

ADAM-5080



ADAM-5081



Specifications

General

- **Certification** CE, FM
- **Connectors** 1 x Plug-in screw terminal (# 14 ~ 22 AWG)
- **Enclosure** ABS+PC
- **Power Consumption** 1.5 W (max.)

Counter/Frequency

- **Counter Aux. Function** Initial preset, hi-low alarm setting, alarm digital output mapping, overflag
- **Channels** 4
- **Input Frequency** 0.3 ~ 1,000 Hz max. (frequency mode)
5,000 Hz max. (counter mode) TTL only
- **Input Level** Isolated or TTL level
- **Isolation Input Level** Logic level 0: 1 V_{DC} max
Logic level 1: 3.5 ~ 30 V_{DC}
- **Isolation Voltage** 1,000 V_{RMS}
- **Maximum Count** 4,294,967,295 (32 bits)
- **Minimum Input Current** 2 mA (isolated)
- **Minimum Pulse Width** 500 µs (frequency mode)
100 µs (counter mode)
- **Modes** Counter (up/down, bi-direction), Frequency
- **Programmable Digital Filter** 1 ~ 65,000 µsec (Noise Filter Function)
- **TTL Input Level** Logic level 0: 0 ~ 0.8 V_{DC}
Logic level 1: 2.3 ~ 5 V_{DC}

Note: Does not support ADAM-5550 & 5560 Series

Ordering Information

- **ADAM-5080** 4-ch Counter/Frequency Module

Specifications

General

- **Certification** CE
- **Connectors** 1 x plug-in screw terminal (# 14 ~ 18 AWG)
- **Power Consumption** 1.1 W (Max.)
- **Enclosure** ABS+PC

Counter/Frequency

- **Channels** 4
- **Maximum Count** 4,294,967,295 (32 bit)
- **Input Frequency** 5 Hz ~ 1 MHz max. (frequency mode)
1 MHz max. (counter mode)
- **Input Level** Isolated or TTL level
- **Minimum Pulse Width** 1µsec. (frequency mode)
1µsec. (counter mode)
- **Minimum Input Current** 2 mA (isolated)
- **Isolation Input Level** Logic level 0: 3 V_{DC} max,
Logic level 1: 10 ~ 30 V_{DC}
- **TTL Input Level** Logic level 0: 0 ~ 0.8 V_{DC},
Logic level 1: 2.3 ~ 5 V_{DC}
- **Isolation voltage** 2,500 V_{RMS}
- **Modes** Counter (up/down, bi-direction, up, A/B Phase),
Frequency
- **Counter Aux. Function** Initial preset, hi-low alarm setting, alarm digital output mapping, overflag
- **Programmable Digital Filter** 1 ~ 65,000 µsec (Noise Filter Function)

Note: Does not support ADAM-5510 KW series

Ordering Information

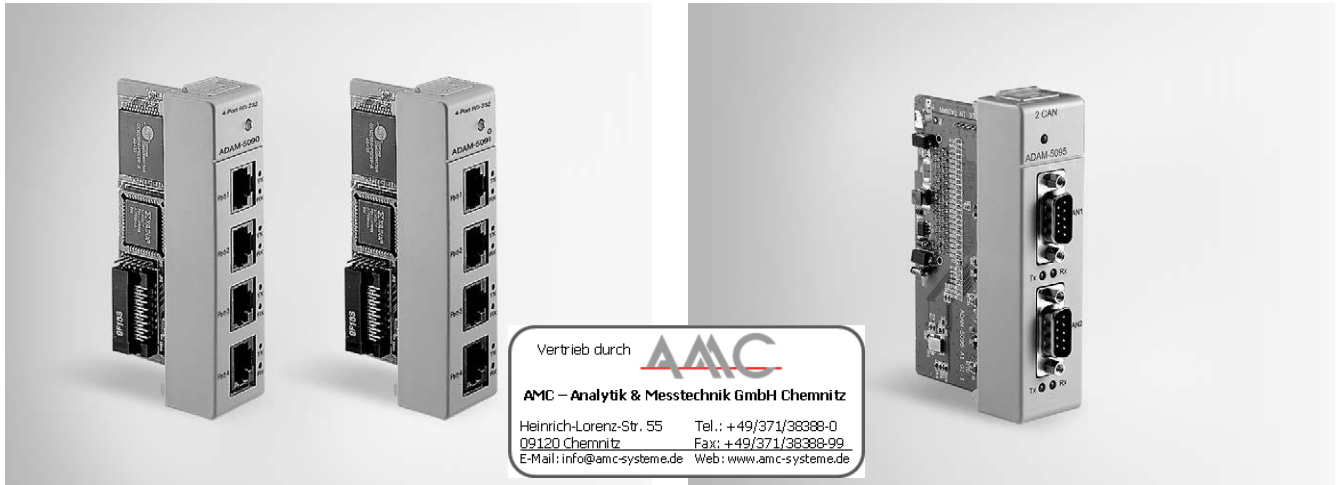
- **ADAM-5081** 4-ch High Speed Counter/Frequency Module

- 1 WebAccess+ Solutions
- 2 Machine Automation
- 3 Energy Automation
- 4 Building Automation Systems
- 5 Automation Software
- 6 Operator Panels
- 7 Automation Panel PCs
- 8 Industrial Panel Computers & Panel PC
- 9 Industrial Monitors
- 10 Industrial Wireless Solutions
- 11 Industrial Ethernet Solutions
- 12 Serial Device Servers and IP Gateways
- 13 Serial Communication Cards
- 14 Embedded Automation Computers
- 15 PACs
- 16 Compact PCI Systems
- 17 M2M I/O Modules
- 18 RS-485 I/O Modules



ADAM-5090/5091 ADAM-5095

4-port RS-232 Module
2-port CAN Module with
Isolation Protection



Vertrieb durch **AMC**
AMC – Analytik & Messtechnik GmbH Chemnitz
 Heinrich-Lorenz-Str. 55 Tel.: +49/371/38388-0
 09120 Chemnitz Fax: +49/371/38388-99
 E-Mail: info@amc-systeme.de Web: www.amc-systeme.de

ADAM-5090

ADAM-5091



ADAM-5095



Specifications

General

- **Certification** CE, FCC Class A (ADAM-5091 only), FM
- **Connectors** 4 x RJ-45
- **Enclosure** ABS+PC
- **LED Indicators** TX, RX (each port)
- **Power Consumption** 0.6 W (max.)

Communications

- **Data Bits** 5, 6, 7, 8
- **Data Signals** TxD, RxD, RTS, TS, DTR, DSR, DCD, RI, GND
- **Parity** none, even, odd
- **Ports** 4
- **UARTs** 1 x 16C954 (128-byte FIFO)
- **Speed** 50 ~ 115.2 kbps
- **Stop Bits** 1, 1.5, 2
- **Support standard Com Port with Share interrupt (ADAM-5091)**

Note:

For ADAM-5510 Series, ADAM-5510KW Series, and ADAM-5511 only (ADAM-5090)
 For ADAM-5550 Series (ADAM-5091)

Ordering Information

- **ADAM-5090** 4-port RS-232 Module
- **ADAM-5091** 4-port RS-232 Module with Share Interrupt
- **OPT1A** 1 m RJ-48 to Male DB9 Cable
- **OPT1D** 30 cm RJ-48 to Male DB9 Cable

Specifications

General

- **Certification** CE, FCC Class A
- **Connector** 2 x DB9-M
- **Enclosure** ABS+PC
- **LED Indicator** TX (Yellow), RX (Green) For Each Port
- **Power Consumption** 1 W (max.)

Communications

- **CAN Controller** SJA-1000
- **CAN Transceiver** 82C250
- **Protocol** CAN2.0 A/B
- **Signal Support** CAN-H, CAN-L
- **Speed** 1Mbps

Protection

- **Isolation Protection** 1,000 V_{DC}

Note:

only for ADAM-5550 series

Ordering Information

- **ADAM-5095** 2-port CAN Module with Isolation Protection

