

# AMAX-5017C

# AMAX-5017V

# AMAX-5017H

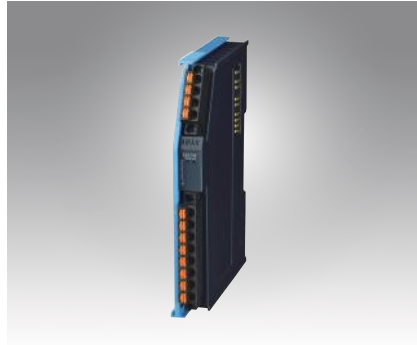
6-ch Current AI Module

6-ch Voltage AI Module

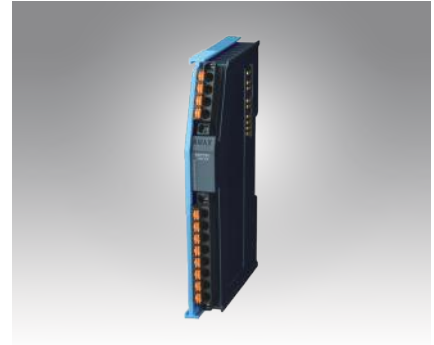
4-ch High Speed AI Module



AMAX-5017C



AMAX-5017V



AMAX-5017H



## Specifications

### General

- **Certification** CE, FCC class A
- **Connector** Pluggable 4P+8P push-in terminal (#24-16 AWG)
- **Enclosure** PC
- **Power Consumption** 2W@24V<sub>DC</sub>
- **Protocol** EtherCAT
- **Transmission Rate** 100Mbps
- **LED Indicator** PWR, RUN

### Analog Input

- **Channels** 6 (Differential)
- **Input Type** mA
- **Current Range** ±20 mA, 0 ~ 20 mA, 4 ~ 20 mA
- **Input Impedance** 120 Ω
- **Resolution** 16-bit with ±0.2% FSR accuracy @25°C
- **Sample Rate** 100 sample/s (per channel)
- **Burn-out detection** Yes

### Protection

- **Isolation Voltage** 2,000 V<sub>DC</sub>

### Environment

- **Operation Temperature** -25~60°C (vertical mounted)
- **Storage Temperature** -40~85°C
- **Relative Humidity** 95% (non-condense)

## Specifications

### General

- **Certification** CE, FCC class A
- **Connector** Pluggable 4P+8P push-in terminal (#24-16 AWG)
- **Enclosure** PC
- **Power Consumption** 2W@24V<sub>DC</sub>
- **Protocol** EtherCAT
- **Transmission Rate** 100Mbps
- **LED Indicator** PWR, RUN

### Analog Input

- **Channels** 6 (Differential)
- **Input Type** V,mV
- **Voltage Range** ±150 mV, ±500 mV, ±1 V, ±5 V, ±10 V
- **Input Impedance** >10M Ω
- **Resolution** 16-bit with ±0.1% FSR accuracy
- **Sample Rate** 100 sample/s (per channel)

### Protection

- **Isolation Voltage** 2,000 V<sub>DC</sub>

### Environment

- **Operation Temperature** -25~60°C (vertical mounted)
- **Storage Temperature** -40~85°C
- **Relative Humidity** 95% (non-condense)

## Specifications

### General

- **Certification** CE, FCC class A
- **Connector** Pluggable 4P+8P push-in terminal (#24-16 AWG)
- **Enclosure** PC
- **Power Consumption** 2.5W@24V<sub>DC</sub>
- **Protocol** EtherCAT
- **Transmission Rate** 100Mbps
- **LED Indicator** PWR, RUN

### Analog Input

- **Channels** 4 (Differential)
- **Input Type** V,mV
- **Voltage Range** ±10 V, 0~10V, 0~20mA
- **Input Impedance** 800 kΩ, for voltage input  
500 Ω, for current input
- **Resolution** 16-bit with ±0.1% FSR accuracy for voltage input  
16-bit with ±0.2% FSR accuracy for current input
- **Sample Rate** 10k sample/s (per channel)

### Protection

- **Isolation Voltage** 2,000 V<sub>DC</sub>

### Environment

- **Operation Temperature** -25~60°C (vertical mounted)
- **Storage Temperature** -40~85°C
- **Relative Humidity** 95% (non-condense)

Vertrieb durch



AMC – Analytik & Messtechnik GmbH Chemnitz

Heinrich-Lorenz-Str. 55 Tel.: +49/371/38388-0  
09120 Chemnitz Fax: +49/371/38388-99  
E-Mail: info@amc-systeme.de Web: www.amc-systeme.de

## Ordering Information

- **AMAX-5017C** 6-ch Current AI Module

## Ordering Information

- **AMAX-5017V** 6-ch Voltage AI Module

## Ordering Information

- **AMAX-5017H** 4-ch High Speed AI Module