

# EKI-2701MPI-5G

## Hardened multi-speed Mega PoE Injector



CE FCC 

### Features

- Supports multi data rate 10M/100M/1G/2.5G/5G for Data in and PoE out
- IEEE 802.3af/at/bt compliant
- Force mode power supports up to 90W by DIP switch
- Power input 54~57 V<sub>DC</sub>, injects power up to 90W
- Provides slim size and DIN-rail with IP40 metal mechanism
- Supports operating temperatures from -40 ~ 75°C

Vertrieb durch



**AMC – Analytik & Messtechnik GmbH Chemnitz**

Heinrich-Lorenz-Str. 55 Tel.: +49/371/38388-0  
09120 Chemnitz Fax: +49/371/38388-99  
E-Mail: info@amc-systeme.de Web: www.amc-systeme.de

### Introduction

EKI-2701MPI-5G is a next-generation injector which is compliant with IEEE 802.3af/at/bt. With PoE (Power over Ethernet) technology, both data and power to Ethernet-enabled devices run on a standard CAT6(A)/CAT7 cable to serve up to 90W.

EKI-2701MPI-5G injector flexibly deploys standard and high powered PD devices to transfer data and power simultaneously through one Ethernet cable while reaching distance up to 100 meters. It supports dual power inputs via a pluggable terminal block or DC jack. DIN-rail and wall-mounting installation options provide greater user expediency.

With the use of EKI-2701MPI-5G, Wifi AP at 5Gbps transmission rate can be easily deployed as it is capable of providing power up to 90W and supporting multi data rate.

### Specifications

#### Communications

- **Standard** IEEE 802.3, 802.3u, 802.3x, 802.3af/at/bt, 802.3ab/802.3bz
- **LAN** 10/100/1000Base-T (X)/2.5G/5G
- **Transmission Distance** Ethernet: Up to 100 m (mid-span)
- **Transmission Speed** Up to 5Gbps

#### Interface

- **Connectors** DATA IN: RJ45  
PoE OUT: RJ45
- **LED Indicators** PoE, SYS

#### Power

- **Power Consumption** Max. 92 W (Full load PoE)
- **Power Input** 54~57 V<sub>DC</sub> (Single input)
- **Power Output** 90W
- **Connectors** 4P Pluggable Terminal Block, DC Jack
- **DIP Switch** PoE Force Mode: ON/OFF (default OFF)

#### Mechanism

- **Dimensions (W x H x D)** 84 x 80 x 25 mm (3.307" x 3.15" x 0.984")
- **Enclosure** IP40, Metal shell with solid mounting kits
- **Mounting** DIN rail, Wall-mounted

#### Protection

- **Reverse Polarity** Present

#### Environment

- **Operating Temperature** EKI-2701MPI-5G-AE: -40 ~ 75°C (-40~167°F)  
EKI-2701MPI-5GPS-A: 0 ~ 40°C (32 ~ 104°F)
- **Storage Temperature** EKI-2701MPI-5G-AE: -40 ~ 85°C (-40 ~ 185°F)  
EKI-2701MPI-5GPS-A: -20 ~ 80°C (-4 ~ 176°F)
- **Operating Humidity** 10 ~ 95% (non-condensing)
- **Storage Humidity** 10 ~ 95% (non-condensing)

#### Certification

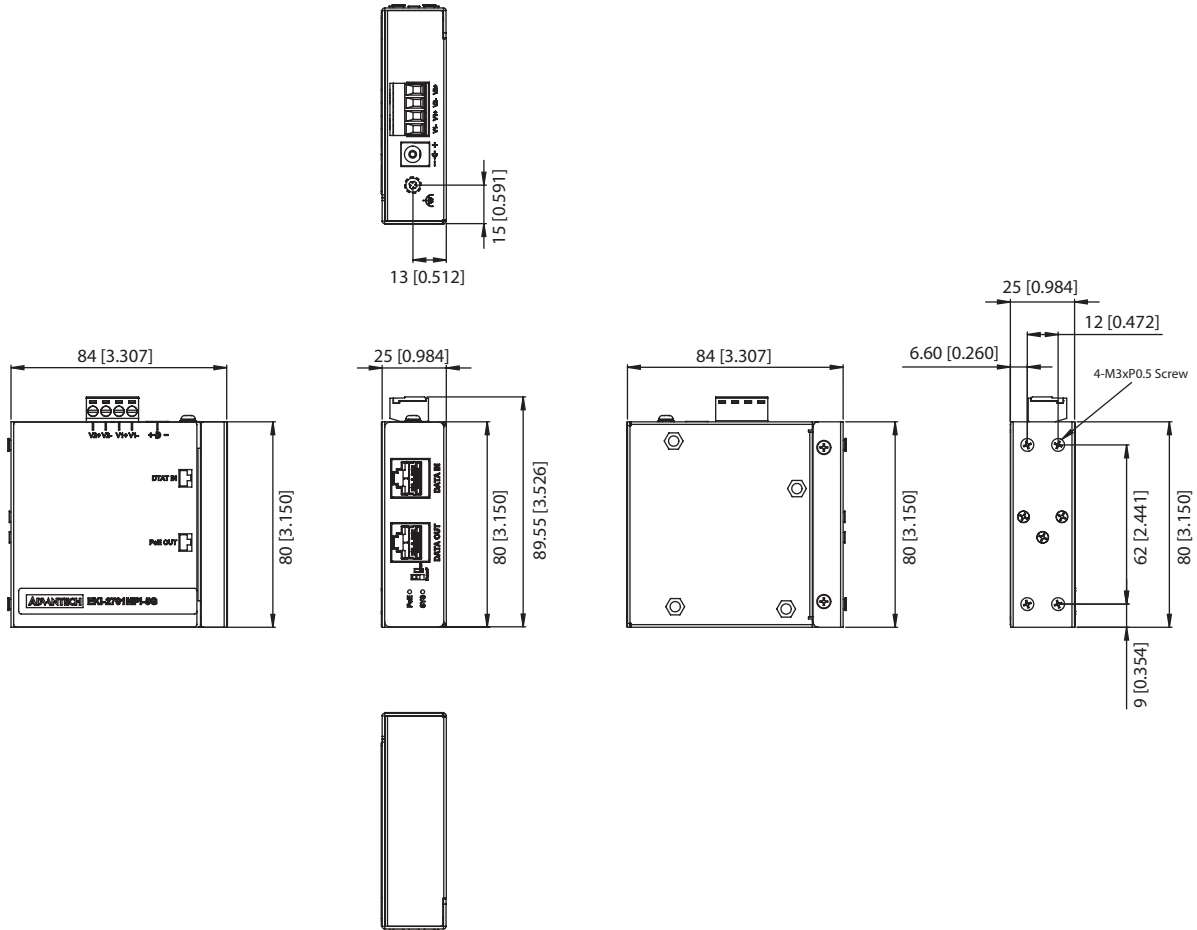
- **EMI** CE, FCC
- **EMS** EN 61000-4-2  
EN 61000-4-3  
EN 61000-4-4  
EN 61000-4-5  
EN 61000-4-6  
EN 61000-4-8
- **Safety** UL62368
- **Shock** IEC 60068-2-27
- **Freefall** IEC 60068-2-32
- **Vibration** IEC 60068-2-6
- **Patent** <http://www.advantech.com/legal/patent>



ADVANTECH   
Premier Partner

## Dimensions

Unit: mm [inch]



**Panel Cut-Out Dimensions (W x H x D): 84 x 80 x 25 mm (3.307" x 3.15" x 0.984")**

## Ordering Information

- **EKI-2701MPI-5G-AE** Hardened 5G Gigabit Mega PoE Injector
- **EKI-2701MPI-5GPS-A** Hardened 5G Gigabit Mega PoE Injector with AC adapter

## Accessory (sold separately)

- **XIMC-FSP120-AWAN3** AC Adapter, 100-240V, 54V, 120W
- **PSD-A120W48** Power Supply, DIN RAIL, 100-240V 120W 48V (adjustable voltage to 55V)

## Partner Product

- **EKI-2701MPI-AE** Industrial Gigabit Mega PoE Injector